

LEGEND

 Site Boundary



Eurowind Energy

SLR

4/5 LOCHSIDE VIEW
EDINBURGH PARK
EDINBURGH
EH12 9DH

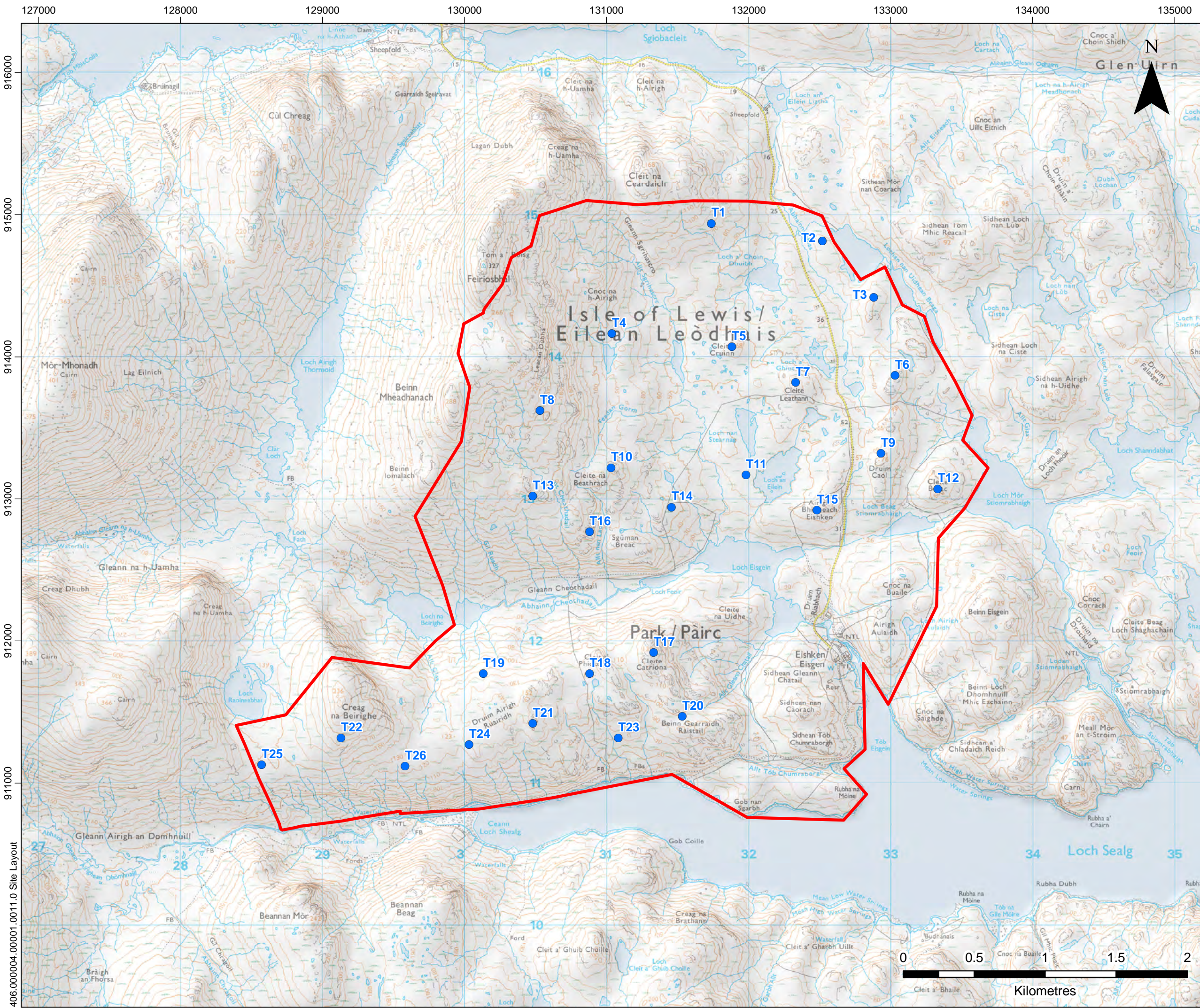
T: +44 (0)131 335 6830
www.slrconsulting.com

**UISENIS WIND FARM
SCOPING REPORT
SITE LOCATION**

FIGURE 1.1

Scale 1:250,000 @ A3 Date JULY 2022





LEGEND

- Proposed Turbine Location
- ▭ Site Boundary



Rev	Date	Comments	SH	JS	MF
0	18/07/2022	Scoping First Issue			



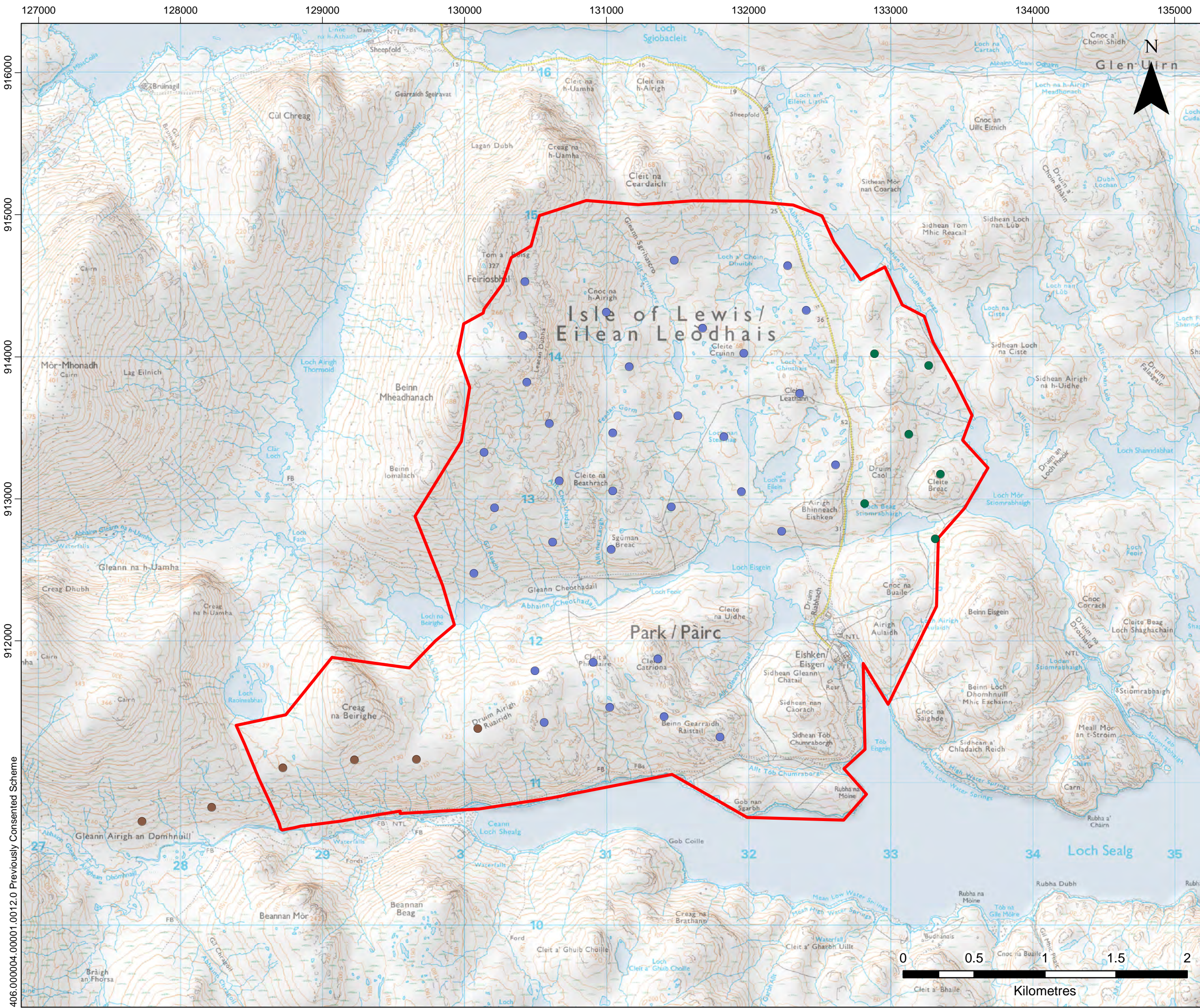
Eurowind Energy

SLR
 4/5 LOCHSIDE VIEW
 EDINBURGH PARK
 EDINBURGH
 EH12 9DH
 T: +44 (0)131 335 6830
 www.slrconsulting.com

UISENIS WIND FARM
SCOPING REPORT
SITE LAYOUT
FIGURE 1.2

Scale: 1:25,000 @ A3 Date: JULY 2022





LEGEND

- Site Boundary
- Muaitheabhal Turbine Location
- Muaitheabhal East Extension Turbine Location
- Muaitheabhal South Extension Turbine Location

Rev	Date	Comments	SH	JS	MF
0	08/07/2022	Scoping First Issue			



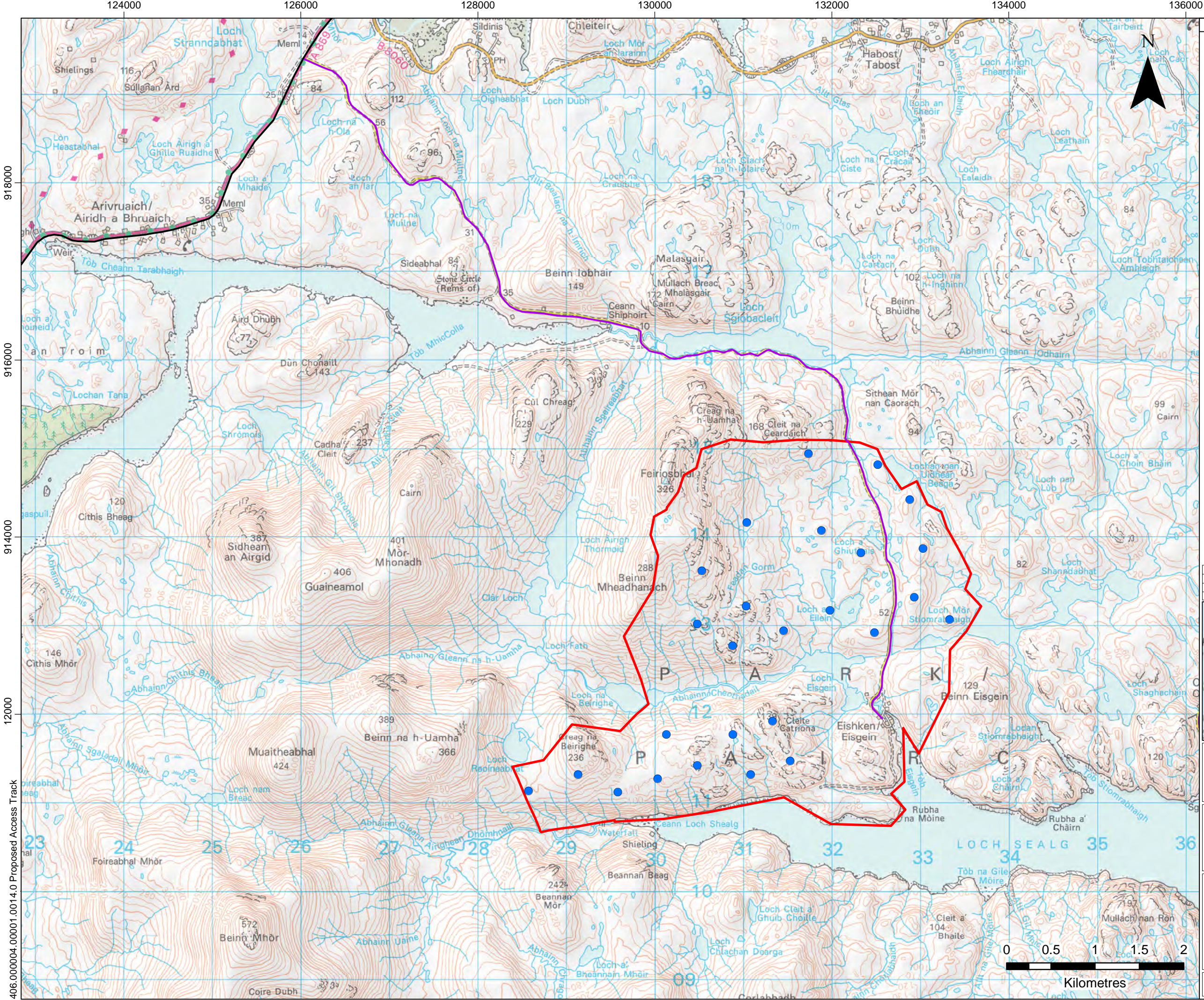
Eurowind Energy

SLR 4/5 LOCHSIDE VIEW
EDINBURGH PARK
EDINBURGH
EH12 9DH
T: +44 (0)131 335 6830
www.slrconsulting.com

UISENIS WIND FARM
SCOPING REPORT
PREVIOUSLY CONSENTED SCHEME

FIGURE 2.1
Scale 1:25,000 @ A3 Date JULY 2022

406.00004.00001.0012.0 Previously Consented Scheme



LEGEND

- Site Boundary
- Proposed Turbine Location

Road Type

- A Road - A859
- Access Track



Rev	Date	Comments	SH	JS	MF
0	21/07/2022	Scoping First Issue			



Eurowind Energy

SLR

4/5 LOCHSIDE VIEW
EDINBURGH PARK
EDINBURGH
EH12 9DH

T: +44 (0)131 335 6830
www.slrconsulting.com

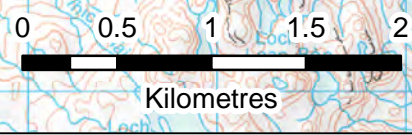
UISENIS WIND FARM

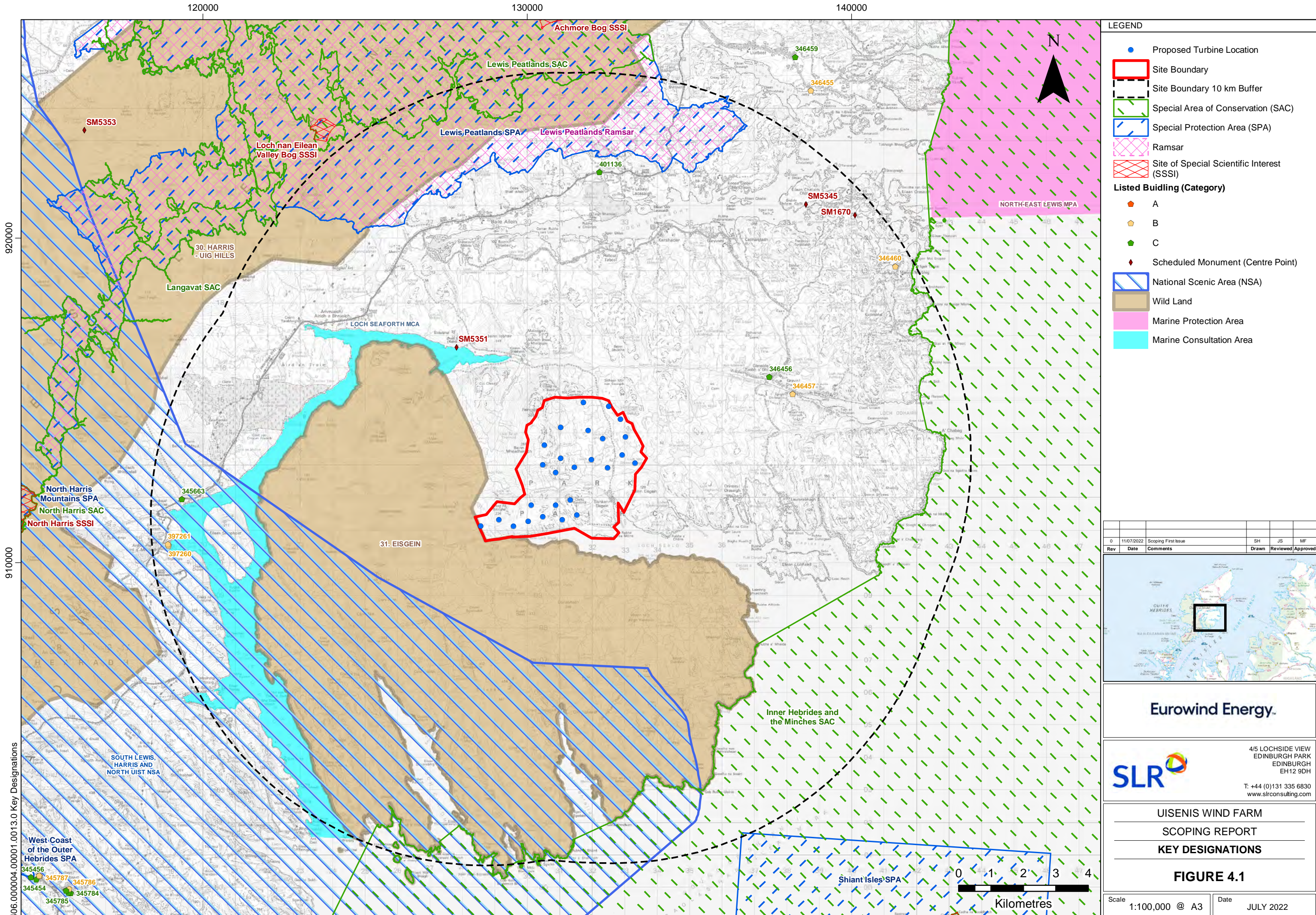
SCOPING REPORT

PROPOSED ACCESS TRACK

FIGURE 3.1

Scale 1:40,000 @ A3 Date JULY 2022





LEGEND

- Proposed Turbine Location
- ▭ Site Boundary
- - - Site Boundary 10 km Buffer
- ▭ Special Area of Conservation (SAC)
- ▭ Special Protection Area (SPA)
- ▭ Ramsar
- ▭ Site of Special Scientific Interest (SSSI)

Listed Building (Category)

- ◆ A
- ◆ B
- ◆ C
- ◆ Scheduled Monument (Centre Point)

- ▭ National Scenic Area (NSA)
- ▭ Wild Land
- ▭ Marine Protection Area
- ▭ Marine Consultation Area

Rev	Date	Comments	SH	JS	MF
0	11/07/2022	Scoping First Issue			



Eurowind Energy

SLR

4/5 LOCHSIDE VIEW
EDINBURGH PARK
EDINBURGH
EH12 9DH

T: +44 (0)131 335 6830
www.slrconsulting.com

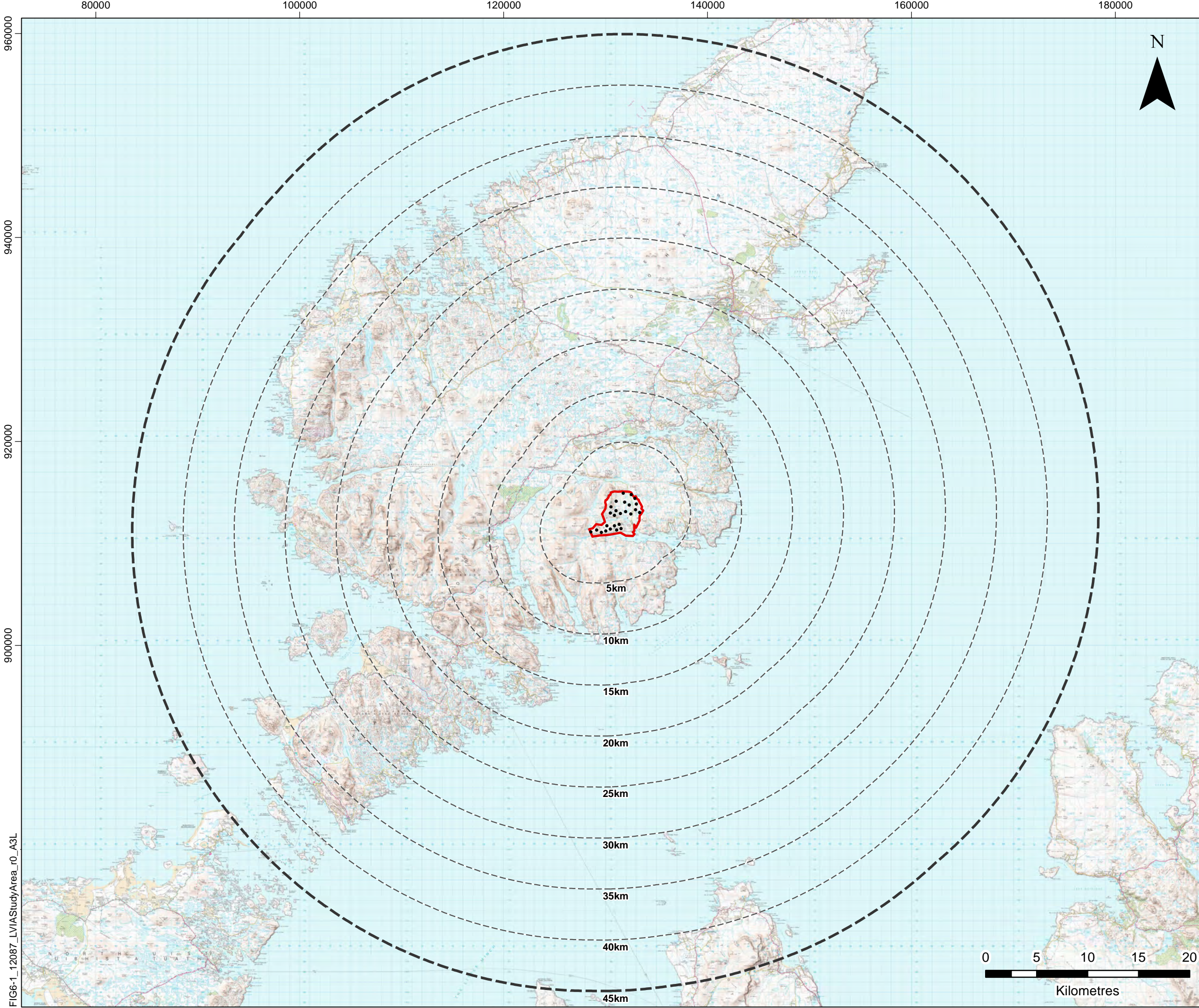
UISENIS WIND FARM

SCOPING REPORT

KEY DESIGNATIONS

FIGURE 4.1

Scale: 1:100,000 @ A3 Date: JULY 2022



LEGEND

- Application boundary
- Turbine layout
- 5km intervals from turbines
- 45km LVIA study area

Rev	Date	Comments	Drawn	Reviewed	Approved
0	29/06/2022	Scoping First Issue	##	##	##



LUC

37 OTAGO STREET
GLASGOW
G12 8JJ

T: +44 (0)141 334 9595
<https://landuse.co.uk/>

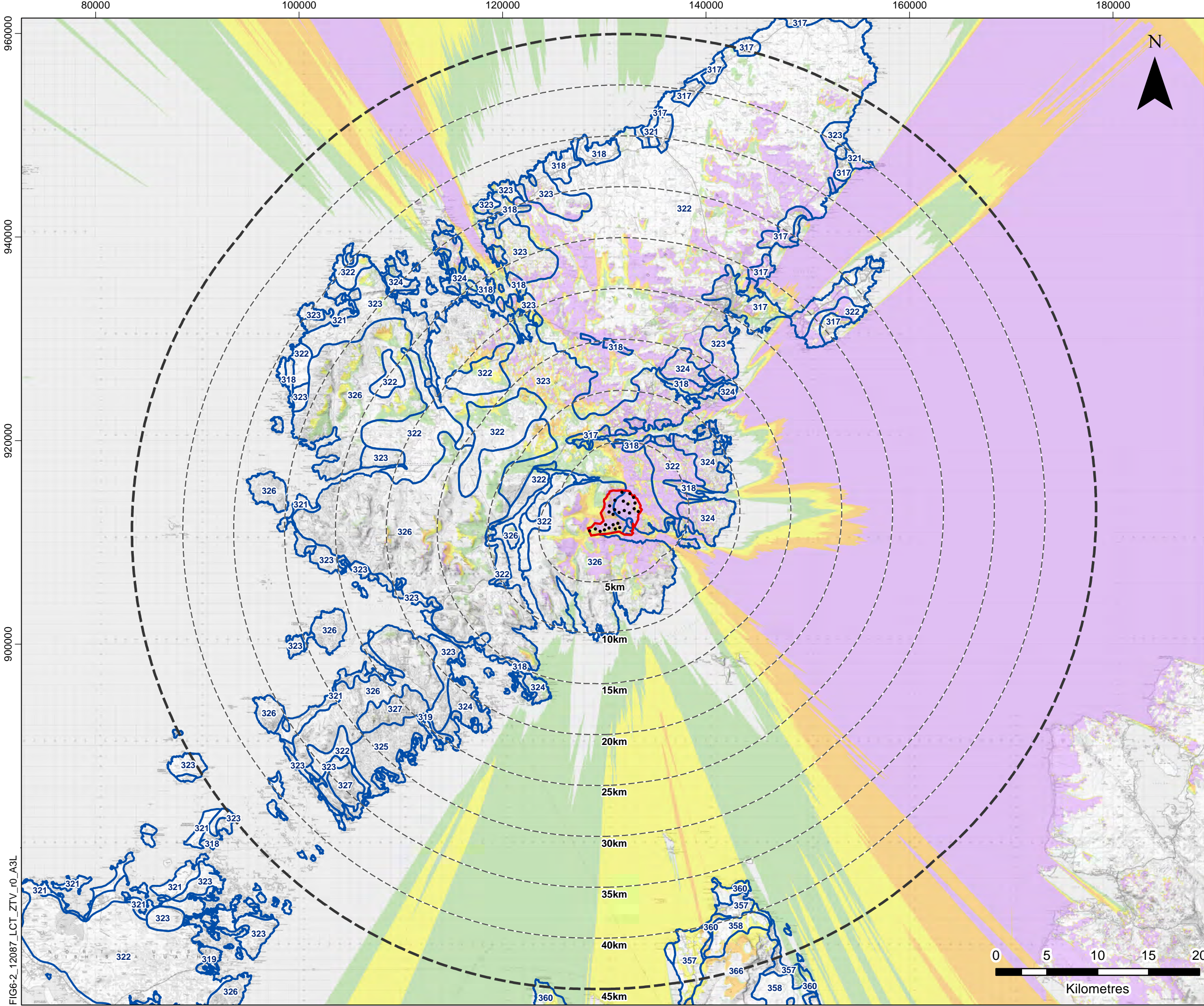
UISENIS WIND FARM
SCOPING REPORT
LVIA STUDY AREA

FIGURE 6.1

Scale 1:350,000 @ A3	Date JULY 2022
-------------------------	-------------------



FIG6-1_12087_LVIAStudyArea_r0_A3L



LEGEND

- Application boundary
- Turbine layout
- 5km intervals from turbines
- 45km LVIA study area

Theoretical blade tip visibility (225m)

- 1-6 turbines visible
- 7-13 turbines visible
- 14-19 turbines visible
- 20-26 turbines visible

Landscape Character Type

- 317: Gently Sloping Crofting
- 318: Linear Crofting
- 319: Dispersed Crofting
- 321: Machair
- 322: Boggy Moorland - Outer Hebrides
- 323: Rocky Moorland - Outer Hebrides
- 324: Cnoc and Lochan
- 325: Rock and Lochan
- 326: Prominent Hills and Mountains
- 327: Rounded Rocky Hills - Outer Hebrides
- 357: Farmed and Settled Lowlands - Skye & Lochalsh
- 358: Low Smooth Moorland
- 360: Stepped Moorland
- 366: Landslide Edge and Undulating Ridge

Notes:
 The ZTV is calculated to turbine tip height (225m) from a viewing height of 2m above ground level. The terrain model assumes bare ground and is derived from OS Terrain 50 height data (obtained from Ordnance Survey in July 2019). Earth curvature and atmospheric refraction have been taken into account. The ZTV was calculated using ArcMap 10.8.1 software.

Rev	Date	Comments	Drawn	Reviewed	Approved
0	29/06/2022	Scoping First Issue	JH	AP	DW



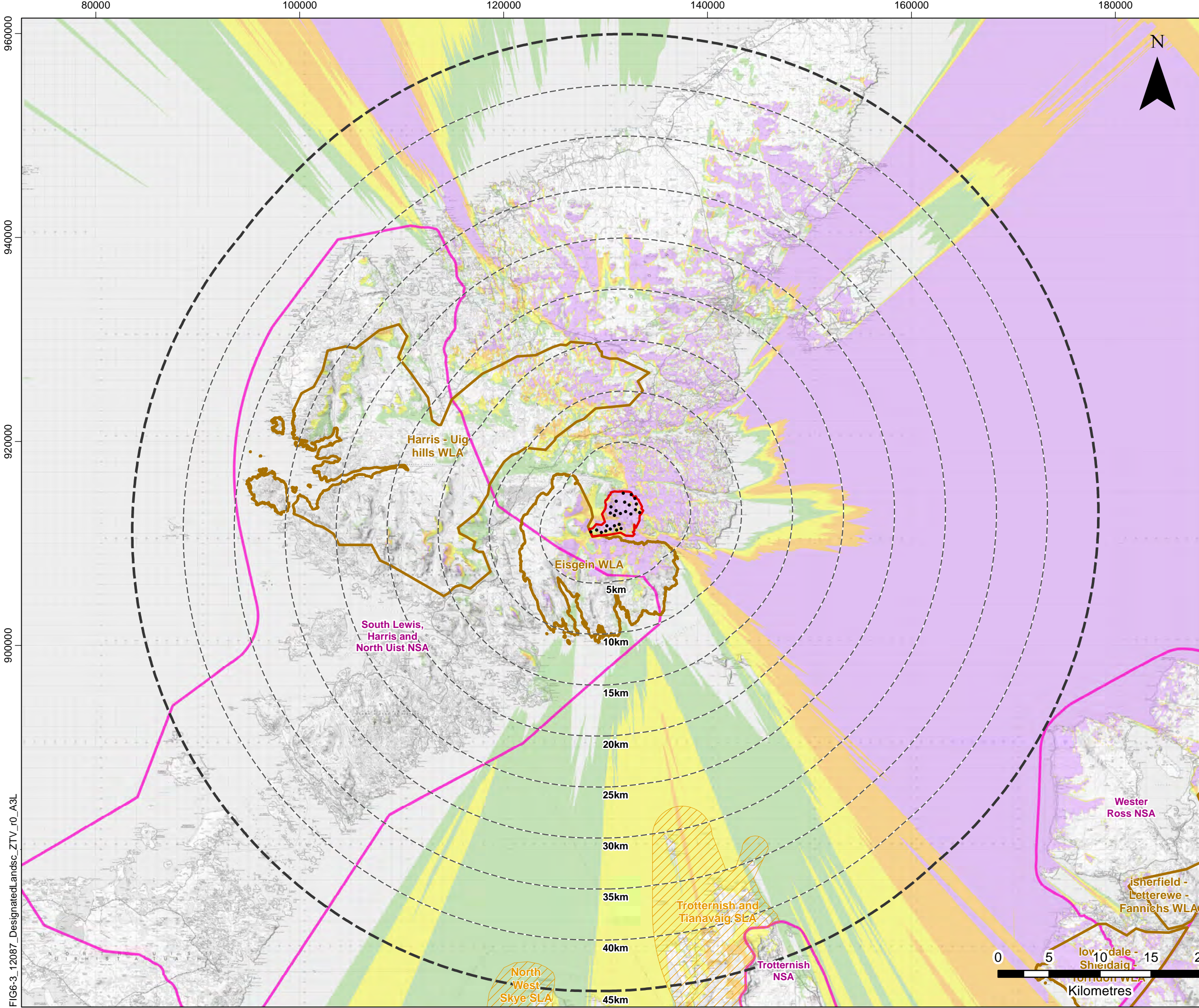
LUC 37 OTAGO STREET
 GLASGOW
 G12 8JJ
 T: +44 (0)141 334 9595
<https://landuse.co.uk/>

UISENIS WIND FARM
SCOPING REPORT
**BLADE TIP HEIGHT ZTV (225M) & LAND-
 SCAPE CHARACTER TYPES (LCTS)**

FIGURE 6.2

Scale: 1:350,000 @ A3 Date: JULY 2022

FIG6-2_12087_LCT_ZTV_r0_A3L



LEGEND

- Application boundary
- Turbine layout
- 5km intervals from turbines
- 45km LVIA study area
- Wild Land Area (WLA)
- Special Landscape Area (SLA)
- National Scenic Area (NSA)

Theoretical blade tip visibility (225m)

- 1-6 turbines visible
- 7-13 turbines visible
- 14-19 turbines visible
- 20-26 turbines visible

Notes:
 The ZTV is calculated to turbine tip height (225m) from a viewing height of 2m above ground level. The terrain model assumes bare ground and is derived from OS Terrain 50 height data (obtained from Ordnance Survey in July 2019). Earth curvature and atmospheric refraction have been taken into account. The ZTV was calculated using ArcMap 10.8.1 software.

Rev	Date	Comments	Drawn	Reviewed	Approved
0	29/06/2022	Scoping First Issue	JH	AP	DW



LUC

37 OTAGO STREET
 GLASGOW
 G12 8JJ

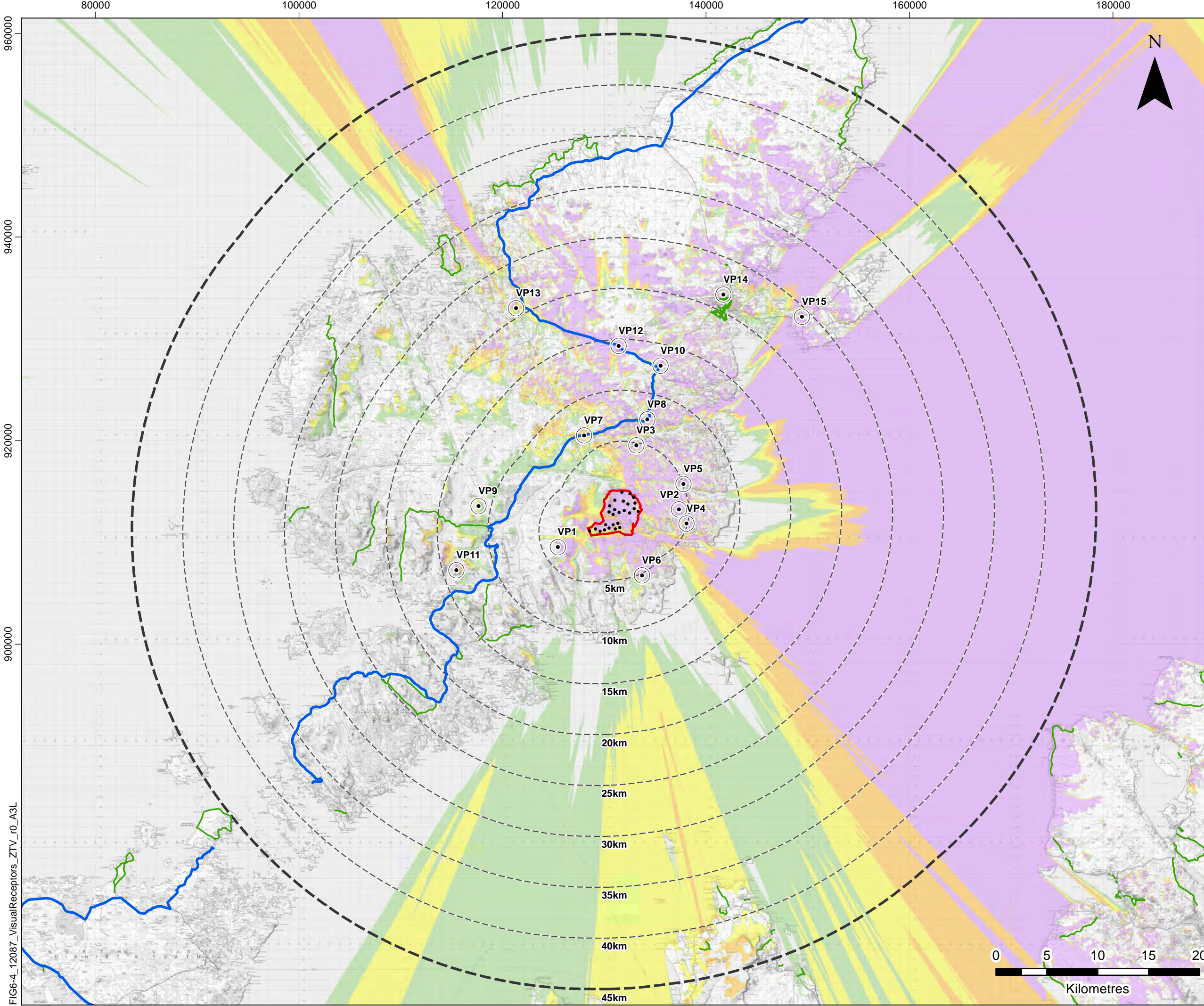
T: +44 (0)141 334 9595
<https://landuse.co.uk/>

UISENIS WIND FARM
SCOPING REPORT
BLADE TIP HEIGHT ZTV (225M), DESIGNATED LANDSCAPES & WILD LAND

FIGURE 6.3

Scale: 1:350,000 @ A3 Date: JULY 2022

FIG6-3_12087_DesignatedLandsc.ZTV_r0_A3L



LEGEND

- Application boundary
- Turbine layout
- 5km intervals from turbines
- 45km LVIA study area
- The Hebridean Way NR 780
- Core Path

Theoretical blade tip visibility (225m)

- 1-6 turbines visible
- 7-13 turbines visible
- 14-19 turbines visible
- 20-26 turbines visible

Viewpoint

- 1: Beinn Mhor
- 2: B8060, east of site
- 3: B8060 near Habost Church
- 4: Leumrabhagh
- 5: Taobh a' Ghlinne
- 6: Uisinis
- 7: Baile Ailein
- 8: A859 near Lacasaigh Cemetery
- 9: Liuthaid
- 10: A859 near Liurbost
- 11: An Cliseam
- 12: Acha Mor
- 13: Calanais Standing Stones
- 14: Stornoway War Memorial
- 15: An-Cnoc

Notes:
 The ZTV is calculated to turbine tip height (225m) from a viewing height of 2m above ground level. The terrain model assumes bare ground and is derived from OS Terrain 50 height data (obtained from Ordnance Survey in July 2019). Earth curvature and atmospheric refraction have been taken into account. The ZTV was calculated using ArcMap 10.8.1 software.

Rev	Date	Comments	Drawn	Reviewed	Approved
0	29/06/2022	Scoping First Issue	JH	AP	DW



Eurowind Energy.

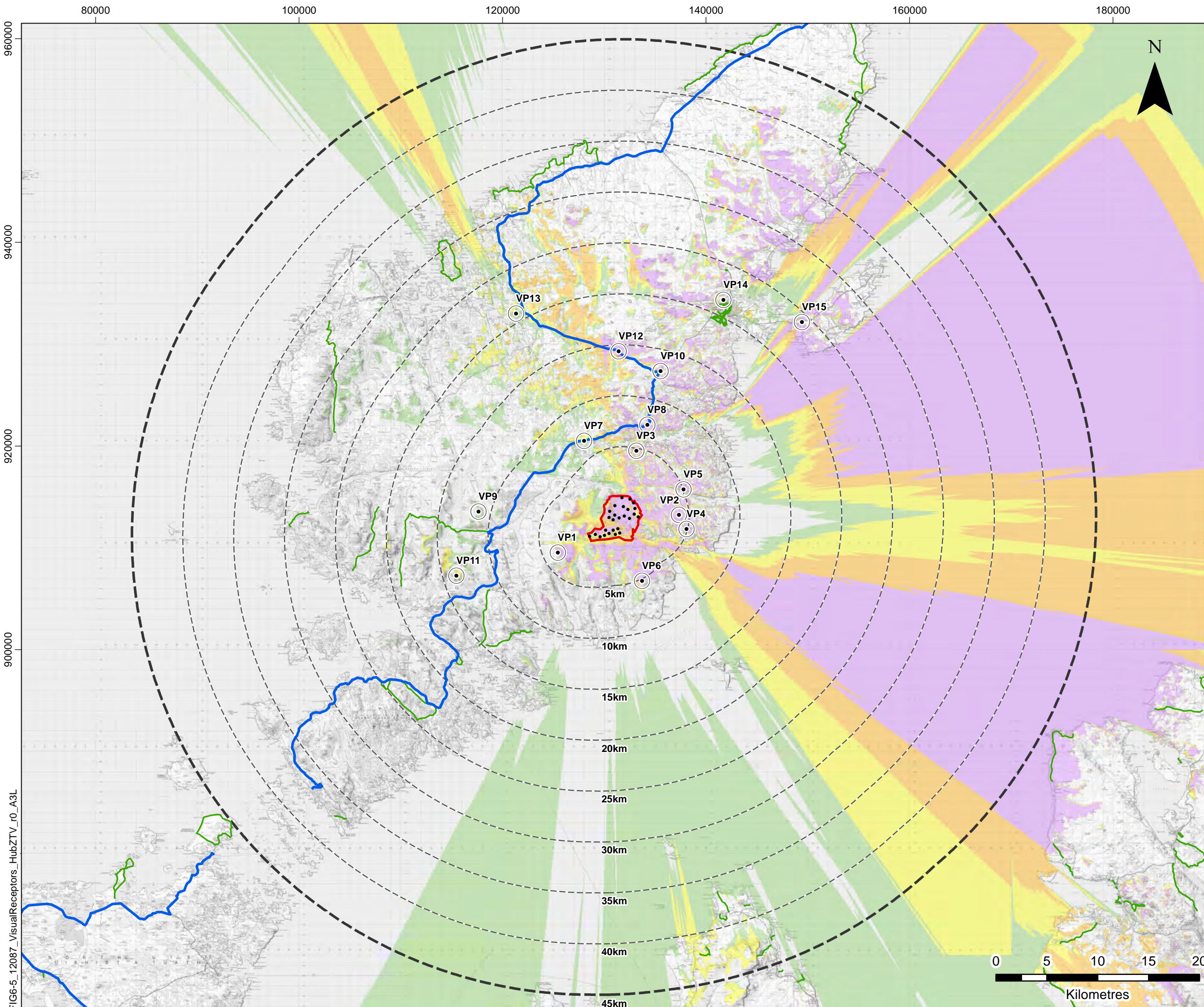
LUC 37 OTAGO STREET
 GLASGOW
 G12 8JJ
 T: +44 (0)141 334 9595
<https://landuse.co.uk/>

UISENIS WIND FARM
 SCOPING REPORT
BLADE TIP HEIGHT ZTV (225M) & VISUAL RECEPTORS

FIGURE 6.4
 Scale 1:350,000 @ A3 Date JULY 2022



FIG6-4_12087_VisualReceptors_ZTV_r0_A3L



LEGEND

- Application boundary
- Turbine layout
- 5km intervals from turbines
- 45km LVIA study area
- Theoretical hub visibility (148m)**
- 1-6 turbines visible
- 7-13 turbines visible
- 14-19 turbines visible
- 20-26 turbines visible
- The Hebridean Way NR 780
- Core Path
- Viewpoint

- 1: Beinn Mhor
- 2: B8060, east of site
- 3: B8060 near Habost Church
- 4: Leumrabhagh
- 5: Taobh a' Ghlinne
- 6: Uisinis
- 7: Baile Ailein
- 8: A859 near Lacasaigh Cemetery
- 9: Liuthaid
- 10: A859 near Liurbost
- 11: An Cliseam
- 12: Acha Mor
- 13: Calanais Standing Stones
- 14: Stornoway War Memorial
- 15: An-Cnoc

Notes:
 The ZTV is calculated to turbine hub height (148m) from a viewing height of 2m above ground level. The terrain model assumes bare ground and is derived from OS Terrain 50 height data (obtained from Ordnance Survey in July 2019). Earth curvature and atmospheric refraction have been taken into account. The ZTV was calculated using ArcMap 10.8.1 software.

Rev	Date	Comments	Drawn	Reviewed	Approved
0	29/06/2022	Scoping First Issue	JH	AP	DW



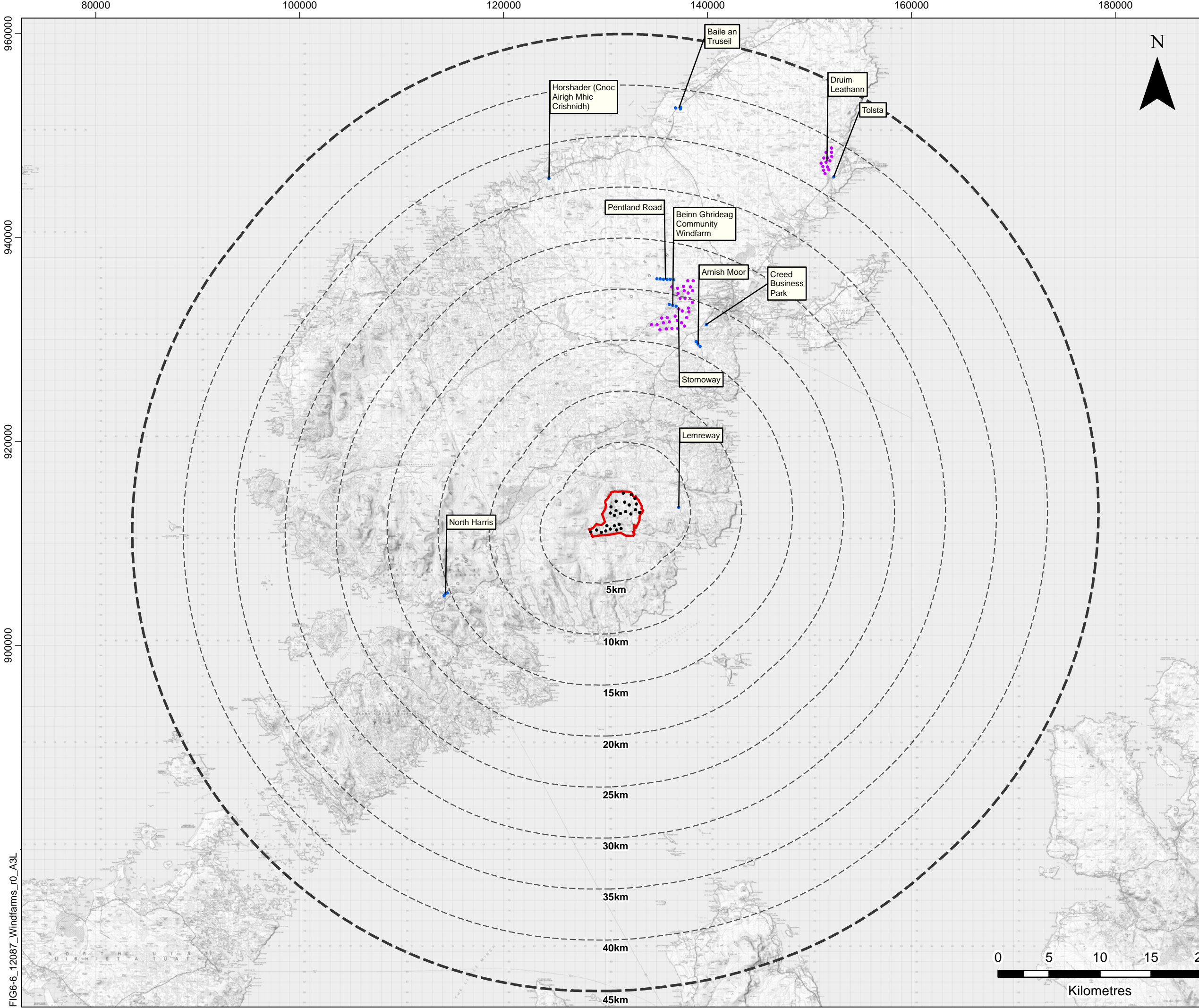
LUC 37 OTAGO STREET
 GLASGOW
 G12 8JJ
 T: +44 (0)141 334 9595
<https://landuse.co.uk/>

UISENIS WIND FARM
SCOPING REPORT
HUB ZTV HEIGHT (148M) & VISUAL RECEPTORS

FIGURE 6.5

Scale: 1:350,000 @ A3 Date: JULY 2022

FIG6-5_12087_VisualReceptors_HubZTV_r0_A3L



LEGEND

- Application boundary
- Turbine layout
- 5km intervals from turbines
- 45km LVIA study area

Wind Farm (by status)

- Operational
- Consented

Rev	Date	Comments	Drawn	Reviewed	Approved
0	29/06/2022	Scoping First Issue	JH	AP	DW



LUC

37 OTAGO STREET
GLASGOW
G12 8JJ

T: +44 (0)141 334 9595
<https://landuse.co.uk/>

UISENIS WIND FARM

SCOPING REPORT

WIND FARM DEVELOPMENTS

FIGURE 6.6

Scale 1:350,000 @ A3	Date JULY 2022
-------------------------	-------------------

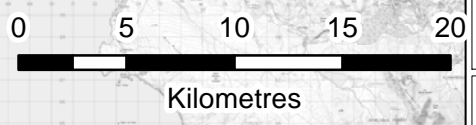
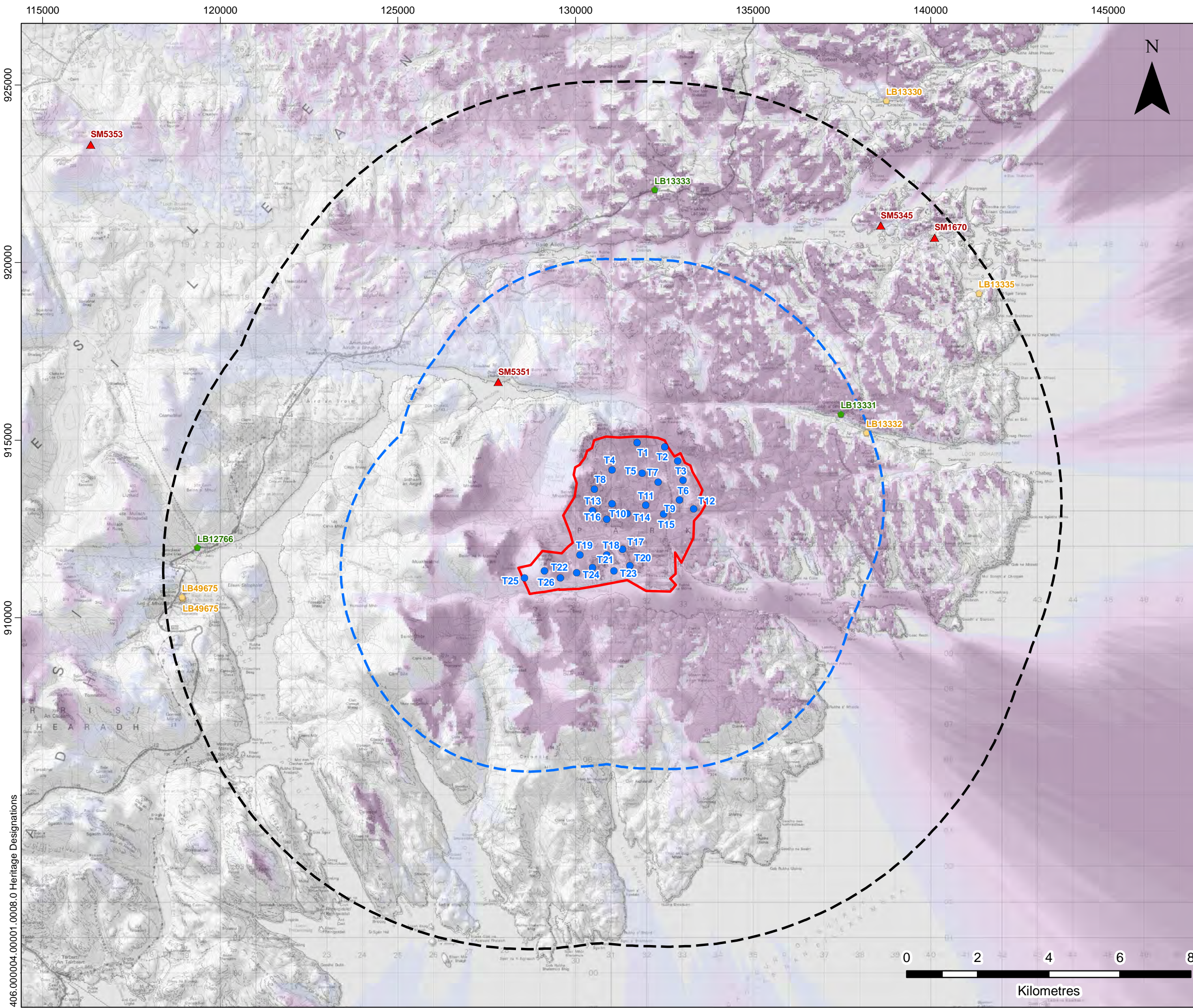


FIG6-6_12087_Windfarms_r0_A3L



LEGEND

- Site Boundary
- Proposed Turbine Location
- Site Boundary 5 km Buffer
- Site Boundary 10 km Buffer
- ▲ Scheduled Monument Centre Point
- ◆ Category B Listed Building
- ◆ Category C Listed Building

Rev	Date	Comments	Drawn	Reviewed	Approved
0	18/07/2022	Scoping First Issue	SH	JS	MF



Eurowind Energy

SLR
 4/5 LOCHSIDE VIEW
 EDINBURGH PARK
 EDINBURGH
 EH12 9DH
 T: +44 (0)131 335 6830
 www.slrconsulting.com

UISENIS WIND FARM
SCOPING REPORT
CULTURAL HERITAGE DESIGNATIONS

FIGURE 10.1
 Scale 1:100,000 @ A3 Date JULY 2022