

383100 383400 383700 384000 384300 384600

666900

666600

666300

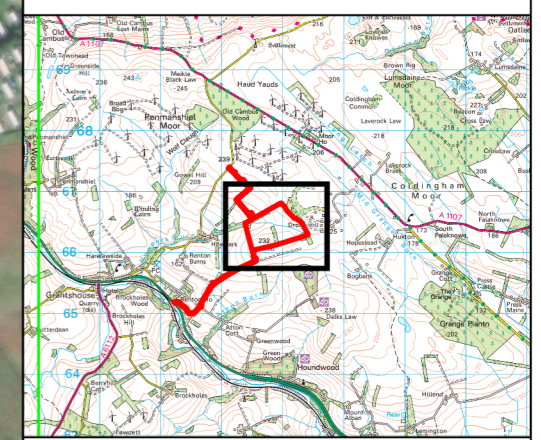
428.V64539.00001.0024.0 UK Habitat Map



**LEGEND**

Site Boundary	g4 - Modified Grassland
Survey Boundary	h1a5 - Dry Heaths, Lowland (H4030)
<b>Linear Features</b>	
u1e - Built Linear Feature	h3 - Dense Scrub
r2b - Other River and Stream	h3h - Mixed Scrub
r1 - Standing Open Water and Canal	r1 - Standing Open Water and Canal
<b>UK Habitat Classification</b>	
c1 - Arable and Horticulture	u1b - Developed Land, Sealed Surface
f1a6 - Degraded Raised Bog (H7120)	u1b5 - Building
f2b - Purple Moor Grass and Rush Pasture	w1h - Other Woodland, Mixed
g1d - Other Lowland Acid Grassland	w2 - Coniferous Woodland
w2b - Other Scots Pine Woodland	
<b>Secondary Code</b>	
12 - Scattered Bracken	
14 - Scattered Rushes	
67 - Dry Stone Wall	
69 - Fence	
115 - Track	
191 - Ditch	

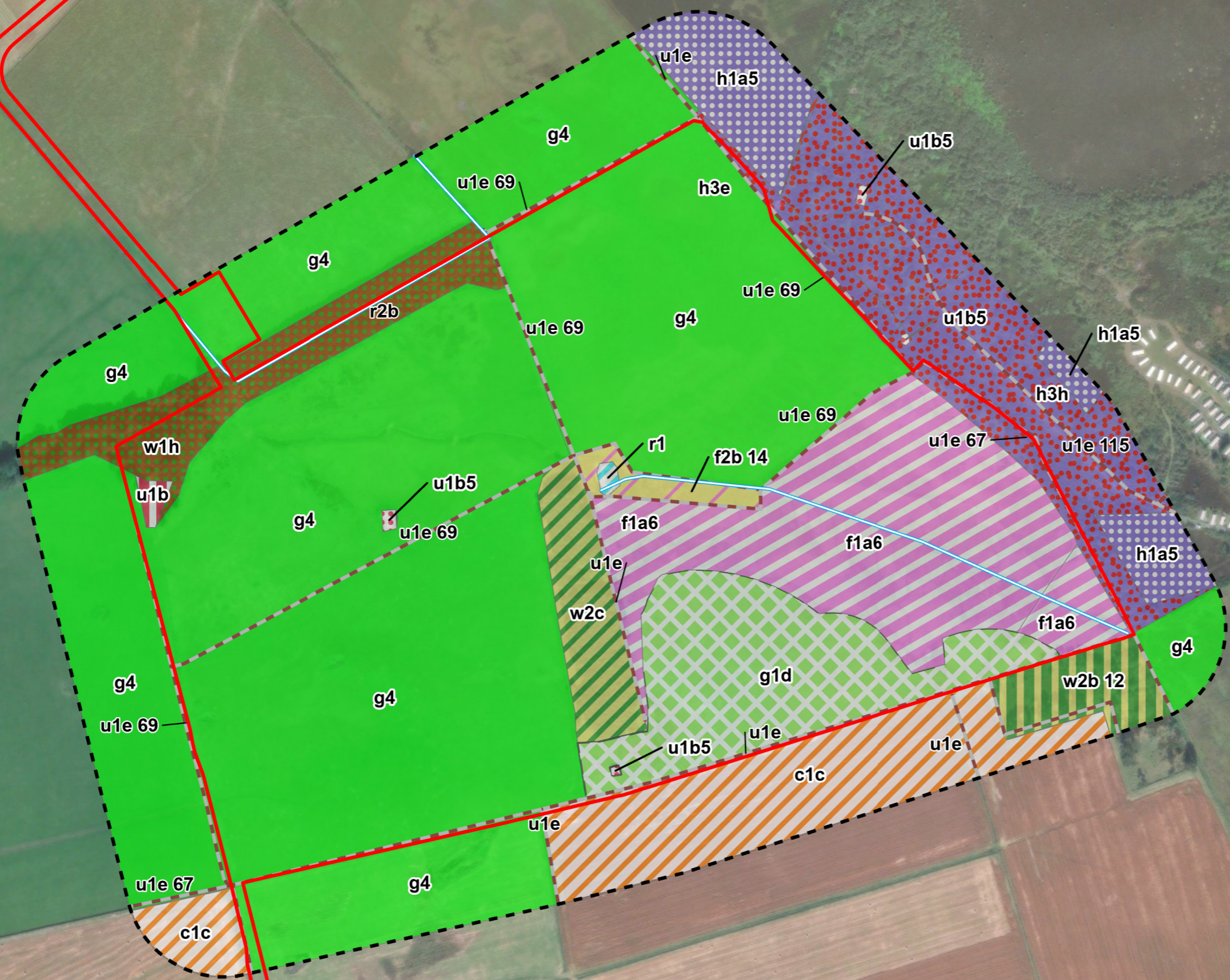
Phase 1 habitat survey completed by Arcus, May 2022, which has been converted to UKHab Classification for this assessment.



**SLR**  
 4/5 LOCHSIDE VIEW  
 EDINBURGH PARK  
 EDINBURGH  
 EH12 9DH  
 T: +44 (0)131 335 6830  
 www.slrconsulting.com

**HOWPARK SOLAR PV FARM**  
 ECOLOGICAL IMPACT ASSESSMENT  
 UK HABITAT CLASSIFICATION MAP

**FIGURE 3-1**  
 Scale 1:5,000 @ A3 Date NOVEMBER 2023





383200

383500

383800

666600

666300

428.V64539.00001.0020.0 Protected and Notable Species



**LEGEND**

Site Boundary

Target Note

**Target Notes**

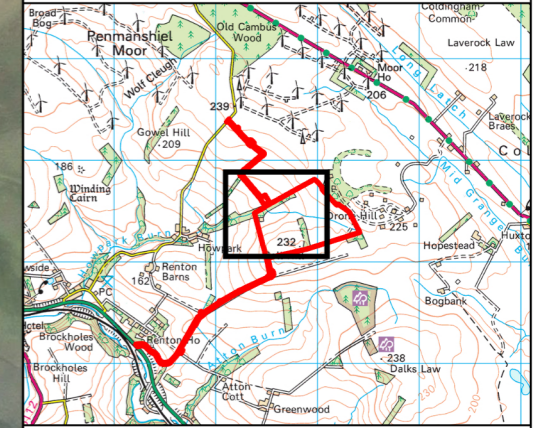
TN1 - Badger Latrine

TN2 - Suitable Reptile Hibernacula

TN3 - Pond

TN4 - Suitable Reptile Hibernacula

TN5 - Brown Hare Observation



**Eurowind Energy™**

**SLR**

4/5 LOCHSIDE VIEW  
EDINBURGH PARK  
EDINBURGH  
EH12 9DH

T: +44 (0)131 335 6830  
www.slrconsulting.com

**HOWPARK SOLAR FARM**

**ECOLOGICAL IMPACT ASSESSMENT**

**PROTECTED AND NOTABLE SPECIES**

**FIGURE 3-2**



Scale 1:3,000 @ A3 Date NOVEMBER 2023